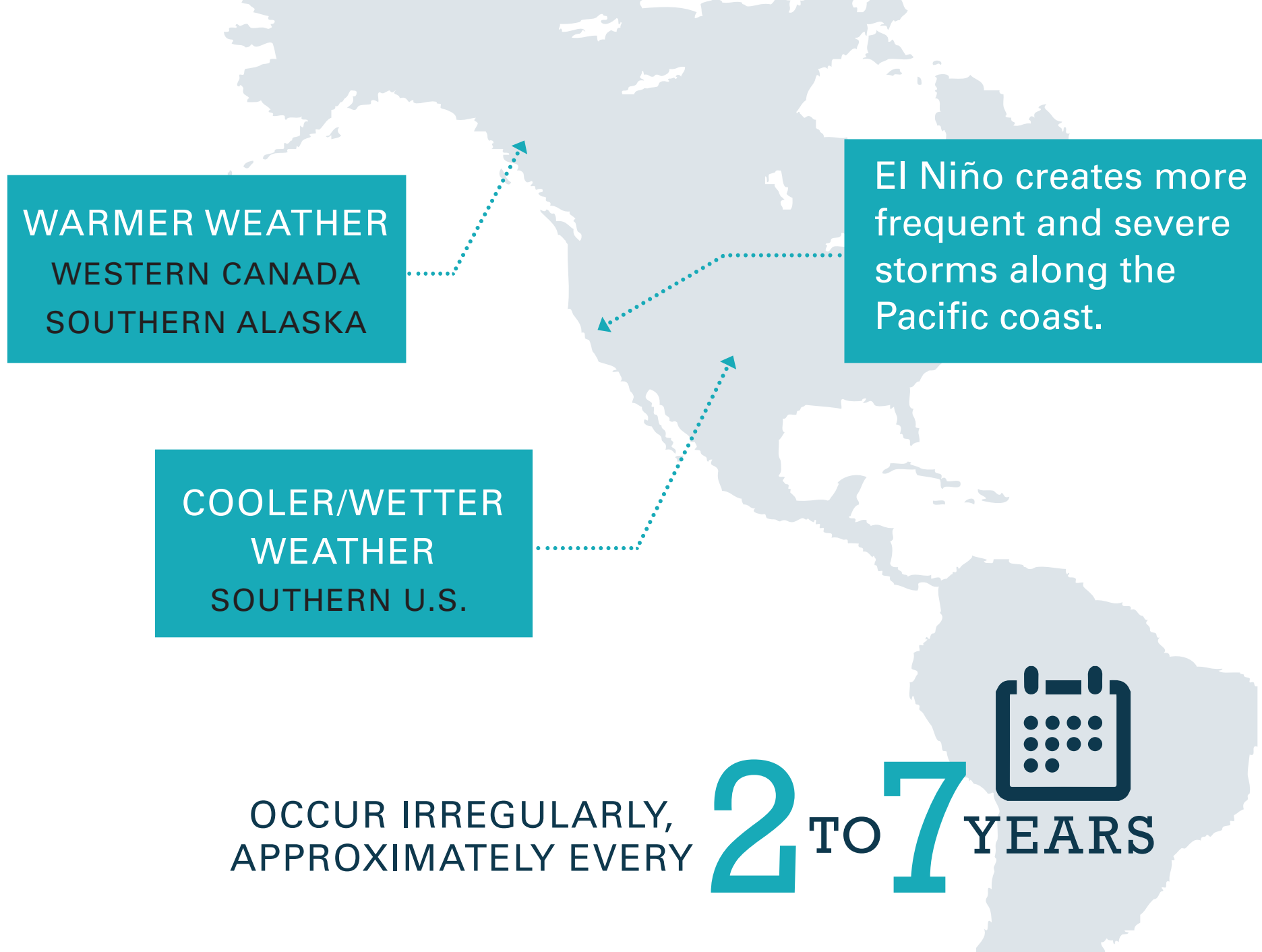


# El Niño

## ARE YOU PREPARED?

El Niño is characterized by unusually warm ocean temperatures in the Equatorial Pacific.



**11**

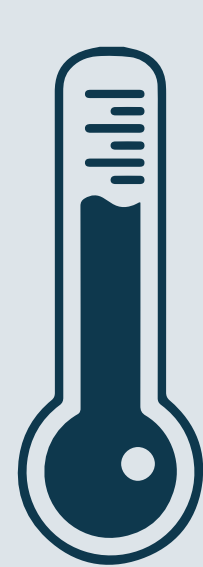
CASES OF A MODERATE **STRONG OR VERY STRONG** occurrence of El Niño since 1951.

## Remember 1998

JANUARY/FEBRUARY

**37.5**

AVERAGE HIGH



**32.1**

NORMAL HIGH

AVERAGE TEMPERATURE

**6.01"**

AVERAGE PRECIPITATION



**4.05"**

NORMAL PRECIPITATION

AVERAGE RAINFALL

## RECORD BREAKING PRECIPITATION

FEBRUARY 1998



**19**

LOCATIONS IN CALIFORNIA HIT PRECIPITATION RECORDS

**SANTA BARBARA**

**21.74"**

IN 1 MONTH

CALIFORNIA STORM DAMAGE CLAIMS

**\$550M**

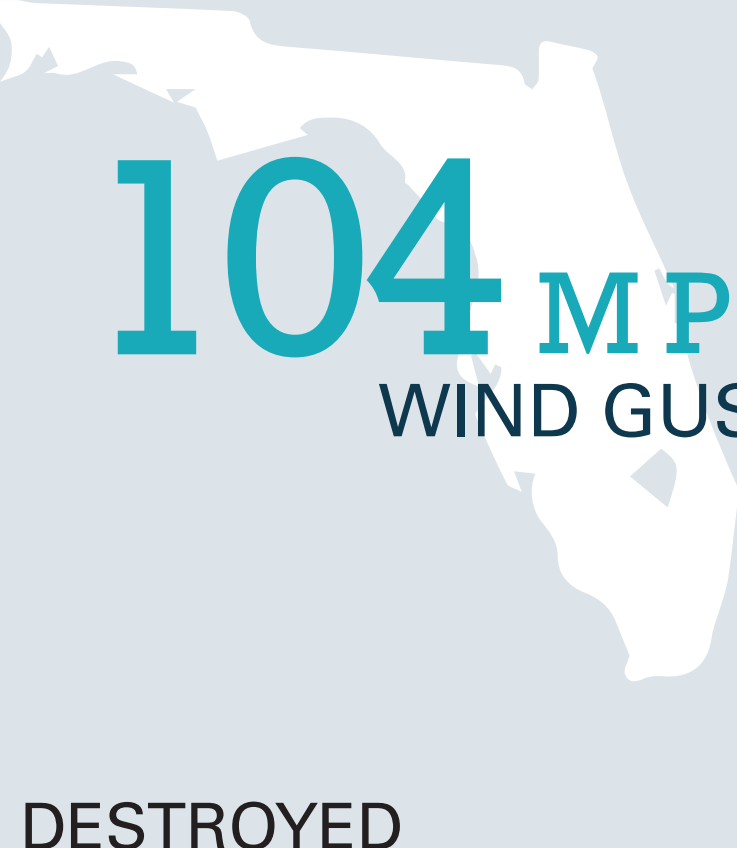
IN DAMAGES FROM STORMS DURING EL NINO

## FEBRUARY 1998 STORM DAMAGE

AN **F4** TORNADO WAS ONE OF A SERIES THAT RIPPED ACROSS FLORIDA



**104 MPH** WIND GUSTS



- 800 RESIDENCES** WERE DESTROYED
- 700** WERE LEFT **UNINHABITABLE**
- OVER 3,500** WERE **DAMAGED** TO SOME EXTENT
- 135,000** UTILITY CUSTOMERS **LOST POWER**

## JANUARY 1998 RELATED DEATHS



FLOODING

TENNESSEE **7**

NORTH CAROLINA **2**

SOUTH CAROLINA **1**

KENTUCKY **1**

ALABAMA **1**



ICE STORM

CANADA **28**

NEW YORK **9**

MAINE **5**

NEW HAMPSHIRE **2**

## Potential effects of El Niño



STRONG WINDS



LIGHTNING STRIKES



EXCESSIVE RAIN



FLOODING



MUDSLIDES

### What you can do now:

- Develop a disaster recovery plan<sup>1</sup>
- Prepare for flooding<sup>2</sup>
- Prepare for heavy winds<sup>3</sup>
- Prepare for lightning<sup>4</sup>
- Discuss your insurance coverage with your agent<sup>5</sup>

### After the storm:

- Initiate your disaster recovery plan
- Safety Tips<sup>6</sup>
  - Be aware of hazards from exposed nails and glass
  - Do not touch downed power lines
  - If damaged, turn off electricity and gas

### Claims Reporting Tips:

- Notify your insurance agency promptly
- Provide accurate information
  - Date, time and location of occurrence
  - General description of what happened
  - Identity and contact information for all persons involved
  - Description of the automobiles and/or injuries
  - Description of the damages, property, persons and witnesses involved, including addresses and telephone numbers
- Protect your property from further damage

<sup>1</sup>Glatfelter Public Practice Disaster Recovery and Business Continuity Plan CD

<sup>2</sup>FEMA – Ready.Government - 09/02/2015

<sup>3</sup>Wind Storms - North Shore Emergency Management

<sup>4</sup>Glatfelter Public Practice Lightning Prevention Guide

<sup>5</sup>NOAA – Safety After the Storm

